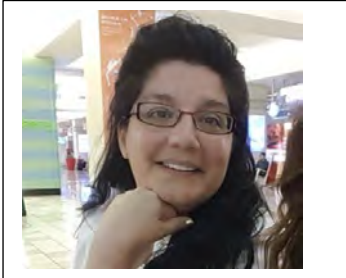


Joy Allen- Coleman



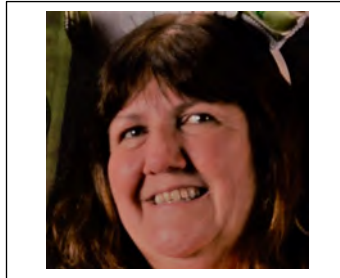
HIGH NEEDS
Christiana HS / Honors
Academy M - F

ANGEL BOYCE



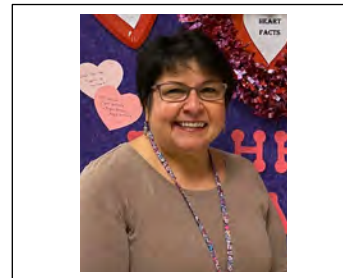
Christiana High School
631-2400 Ext 3
454-2020 Fax

LAURA BUBACZ



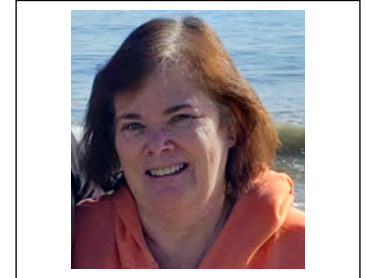
Kirk Middle School
454-2164 Ext 43770
454-3491 Fax

LISA CONOVER



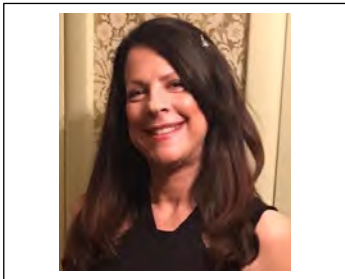
Oberle Elem
834-5910 Ext 4
834-5916 Fax

KATHY DAVENPORT



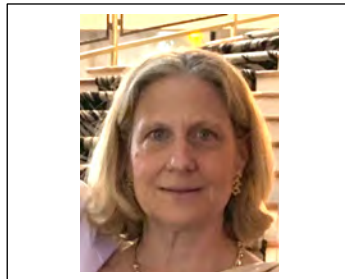
HIGH NEEDS
Glasgow HS M,T
Gauger MS. W,R,F

CAREN DIBATTISTA



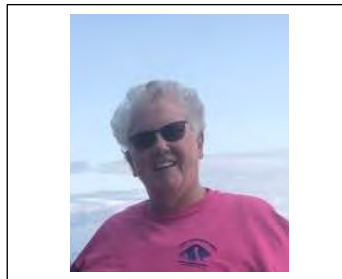
Brookside Elem
454-5454 Ext 31302
454-3480 Fax

MARGUERITE DIEHL



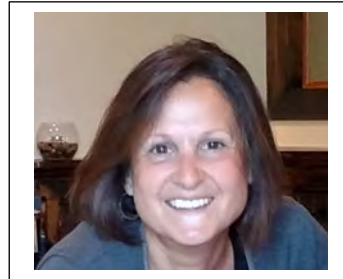
McVey Elem
454-2145 Ext 12447
454-3486 Fax

MARTHA DIFFLEY



Glasgow High School
631-5600 Ext 15609
454-5453 Fax

PAT DURBANO



Wilson Elem
434-2180 Ext 15642
454-2052 Fax

JANENE EBAUGH



Brader Elem
454-5959 Ext 112
454-5459 Fax

TIFFANY FORD



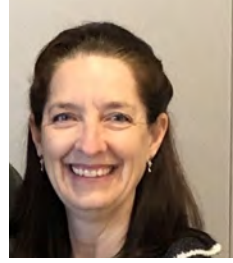
West Park Elem
454-2290 Ext 21038
454-3488 Fax

MICHELLE GAYESKI



Networks Program
454-2233
454-5446 Fax

MARY HAUSHEER



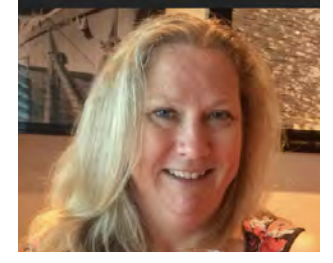
Bancroft School
429-4102 Ext111
429-4104 Ext 111
429-429-3956 Fax

REBECCA HAYMAN



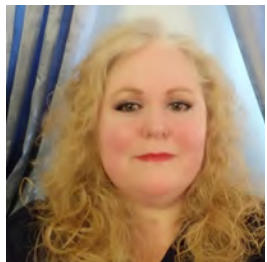
FLOAT NURSE
Keene Elem - Home

LYDIA HENRY



Maclary Elem
454-2142 Ext 14732
454-3485 Fax

KRISTIE HILL



Keene Elem
454-2018 Ext 204
454-5969 Fax

TERRY HOFFMAN



Leasure Elem
454-2301 Ext 413
454-2109 Fax

TERRI INERFIELD



HIGH NEEDS
Newark HS M,T,W
Kirk MS R,F

ANN KAISER



HIGH NEEDS
CEEC
454-2721 Ext 3

**ELIZABETH KELLY-
JOHNSON**



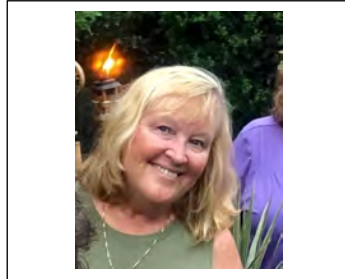
Jones Elem
454-2131 Ext 33
454-3481 Fax

LISA KITTEL



CEEC
454-2721 Ext 3
454-2010 Fax

KAREN KLEINSCHMIDT



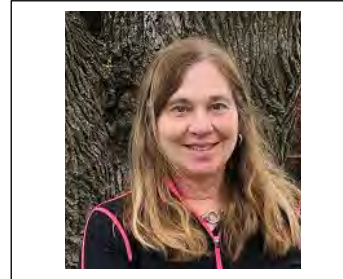
Christina School District
Lead Nurse
834-5910
834-5916 Fax

CRISTINA KRAITER



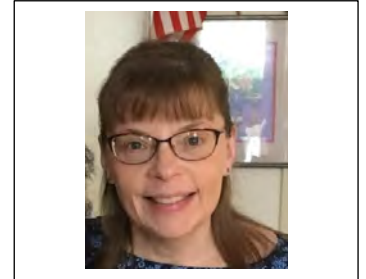
Stubbs Elem
City AM/PM Pre-K
Full Day Pre-K and K
429-4175 Ext102
4293958 Fax

JUDY LATTANZI



Gauger Middle School
454-2357 Ext 105 Judy
Ext Kathy 330 (W,R,F)
454-3482 Fax

ANNAMARIE MEDEIROS



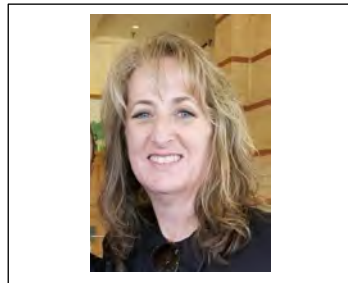
Bancroft School
429-4102 Ext111
429-4104 Ext 111
429-429-3956 Fax

BETH MILLER



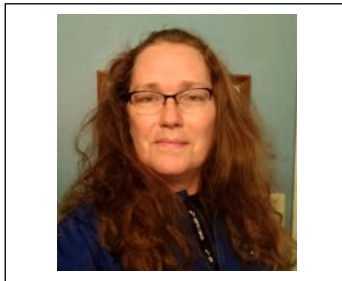
Bayard School
429-4118 Ext 610
429-4153 Fax

LESLIE MYERS



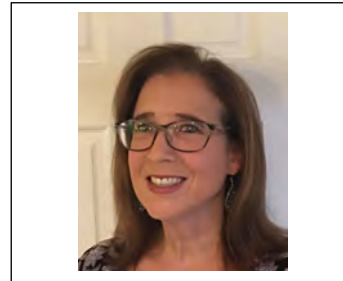
Jennie Smith Elem
454-2174 Ext 4
454-3487 Fax

**MICHELE PANCOAST-
LOCKWOOD**



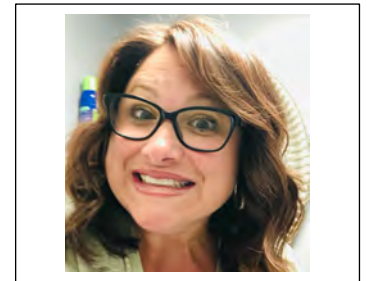
Brennen School / DAP
292-6021 Ext 3
Michelle Ext 41534
454-2178 Fax

KIM REKITO



Shue Middle School
454-2171 Ext 306
454-454-3492 Fax

AUBREY ROGERS



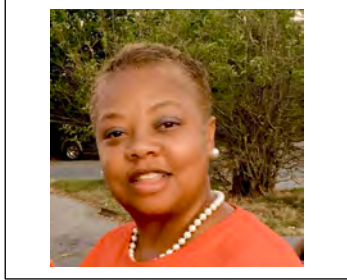
HIGH NEEDS, FLOAT
Kirk MS M;
Oberle T,W;
Newark HS R,F

CARMEN SALDANHA



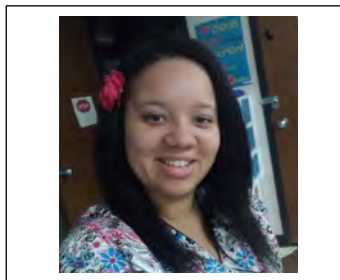
HIGH NEEDS
Marshall M,R,F;
Shue MS T,W

TRUDY SMALL



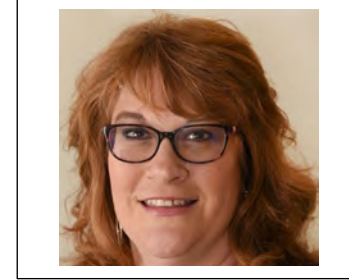
Downes Elem
454-2133 Ext 142543
454-3483 Fax

KRISTIN TURNER



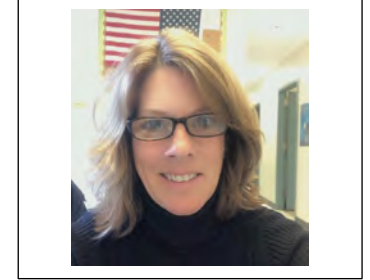
Douglass School
429-4146. Ext 107
429-4920 Fax

TERRI WALLACE



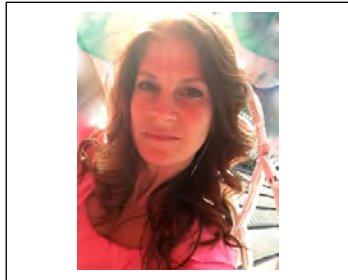
DSD/Delaware School
for the Deaf
454-2301 .Ext. 45596
454-3493 Fax

SUSAN WEBBER



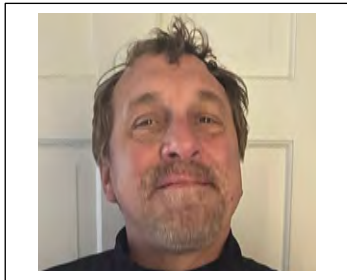
Newark High School
631-4700.
454-454-2155 Fax

GINA WEDEL



Marshall Elem
454-4700 Ext 106
454-4706 Fax

DREW WEDEL



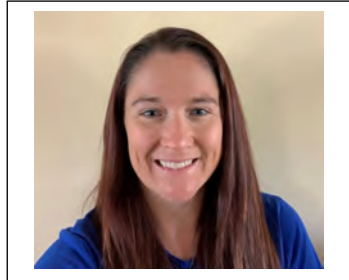
Bayard School
429-4118 Ext 610
429-4153 Fax

MARIA WEEKS



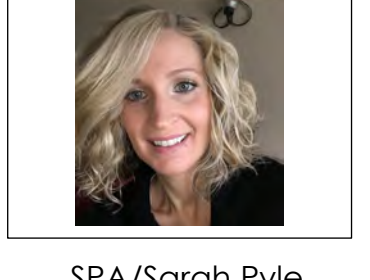
Gallaher Elem
454-2464 Ext 12457
454-3484 Fax

KIM WHITE



Brennen School / DAP
292-6021 Ext 3
Kim Ext 41535
454-2178 Fax

VICTORIA(TORI)YOST RIOS



SPA/Sarah Pyle
Academy
429-4158.
429-3959 Fax

DAWN GOWER



District Substitute Nurse

ELISE KIDD



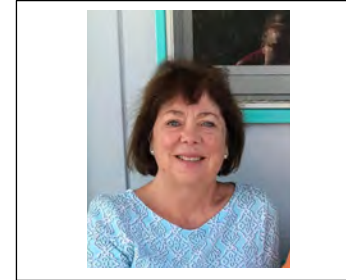
District Substitute Nurse

VJ SCHREFFER HAGEN



District Substitute Nurse

KAYE SNOOK



District Substitute Nurse